

DATASHEET

Theora Smart Fall Detection™

Advancing Peace of Mind



Theora Connect now has the new and incredible, game changing, first of its kind AI / Neural Networking platform that enables our world class Smart Fall Detection™

Theora Smart Fall Detection leads the industry in accurate, timely, and always-on fall detection.

Falls Are the Leading Cause of Injury for 65+ Adults

Falls are the leading cause of injury—and death caused by injury—for adults 65 and older, and 3 million are treated in the ER for injuries at a cost of more than \$50 billion. However, 72% of falls not ever reported, making accurate and timely fall detection even more critical.

Current fall detection solutions generate too many false positives and false negatives. Other products are not able to differentiate between a hard fall (high impact) and soft fall (sliding down from chair/low impact).

Theora Smart Fall Detection changes everything. With our Artificial Intelligence and Neural Network platform, we can detect all falls with an unprecedented degree of accuracy.

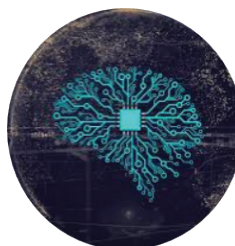
How it works

Theora Smart Fall Detection is an option for the award-winning Theora Connect™ wearable. The proven and affordable Theora Connect connects caregivers with loved ones providing wellness information like activity and location.

Theora Connect's always-on communications delivers instant connectivity between caregiver and care recipient should a fall be detected.



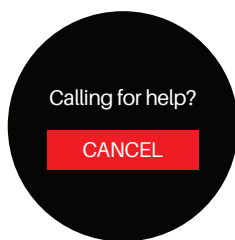
When a fall is detected, the Theora Connect sends the data to our neural network, Theora Rhythms™.



Theora Rhythms then looks at what happened before, during and after the fall to determine if it is truly a fall, or if it a false positive.



If it's determined to be a real fall, the wearer is asked to confirm or deny the fall.



If the wearer does not respond, or confirms their fall, an emergency call is sent to the primary caregiver along with an alert to all other contacts.



I have fallen and I need help



Why it's different

Theora Smart Fall Detection™ is changing fall detection. Current solutions (mPERS, smart watches) detect impact, not what happens before, during, and after a fall. Solely detecting impact leads to false positives. For example, a person could be walking down a hallway, hit their fall detection device on a doorway and have that impact register as a fall. The more this happens, the less value is provided to the user, and it is common for users to turn off fall detection or stop wearing their device. For those at risk of a fall, this is obviously the wrong thing to do.

On the other hand, Theora Rhythms™ is watching what happens before the fall (normal gait, movement), the impact or fall, and what happens after the fall (is the person motionless or moving around normally). Based on the constantly updating algorithm, Theora Rhythms can accurately understand what happened and initiate a dialogue with the wearer to see if a call for help is needed when a real fall is detected. Our approach minimizes false positives which means a wearer will perceive greater value and have greater confidence in using the Theora Connect wearable vs. other products. With our continuously learning neural network, we are also extremely accurate in detecting real falls, which minimizes false negatives too.

The current generation of fall detection products evaluate each fall on its own, and the history and trends of a fall are not connected to a pattern. However, the most important predictor of a fall is a previous fall or changes in gait and balance.

With Theora Rhythms, wearers are remotely monitored by the neural network (think of a caregiver's brain in the cloud that is always watching, always learning and always creating new patterns). With the ability to remember and learn from falls or changes in behavior, Theora Rhythms can even detect a hard fall vs. a soft fall.

Not only can Theora Rhythms monitor for falls, but it can also monitor location and activity to determine any differences and concerning trends. If everything looks normal, monitoring unobtrusively continues. If something looks amiss, an alert is sent to the caregiver.

With the Theora Link Pro™ app, notifications of falls, location, activity, wandering, entering and exiting Safe Zones are shown. Additionally, alerts are sent to the app so the caregiver can immediately check in with the wearer. The Theora Connect smartwatch automatically answers incoming calls from the caregivers.

How it helps

- For the caregiver, monitoring with minimal effort and maximum value ensures that care is lovingly delivered. With Theora Care, caregivers
- Know when someone is active or inactive to proactively contact and assist if needed
- Can find persons faster who wander
- Know when, where and how your loved one may need assistance, even before a frightening and time-consuming event

The Theora Care suite of IoT devices and SaaS applications provide caregivers with better day-to-day information, communications, and location services for their loved ones. Our solutions deliver situational awareness not only for the caregiver, but also for the professionals, medical and care management that are involved in the loved one's care plan. Theora Care is located in Austin, TX. Our customers range from family caregivers, to industry leaders such as Baylor, Scott and White and Texas A&M.

512-371-6164 | support@theoracare.com | www.theoracare.com |   